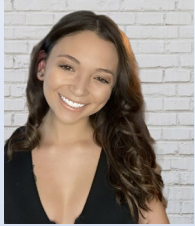


Significance of Industrial Hemp in Agriculture



Vanessa Oden, vanessaoden@ufl.edu



Before 1937, hemp was used as a legal tender and was even used to pay taxes



Hemp is a superfood. It is a good source of protein, iron, zinc, calcium and omega 3 fatty acids



Every ton of hemp eliminates 1.63 tons of carbon

Cannabis sativa L., Industrial Hemp:

- Industrial Hemp is an emerging valuable specialty crop that can be cultivated for various uses like fiber, seed, or cannabidiol.
- The USA has reintroduced hemp and legalized its production as an agricultural product through the 2018 Federal Farm Bill.
 - According to this, cultivated hemp that is allowed should have a THC threshold not exceeding 0.3.
 - Hemp and marijuana belong to the same plant species (*Cannabis sativa*) but hemp is genetically different and has a different chemical makeup.

Cannabis sativa L. importance:

Hemp has the capability to be environmentally friendly and a highly sustainable crop.

- Can be grown with no pesticides
- Replenishes soils -> phytoremediation
- Used in crop rotation to overpower weeds
- Can be used in organic farming for pest management, botanical insecticides
- Hemp biomass can be utilized for bioenergy production

A multi purposeful crop:

- The hemp hurd is used in animal bedding and composites
- The hemp seed and oil are used in food, beverages, as a protein alternative and the seed is used in pharmaceutical products

Programs for Hemp growers:

- Crop Insurance and Safety Net
- Reporting Hemp Acres
- Farm Loans
- Conservation

Growers can contact their local insurance agent near them or local FSA county office for more information